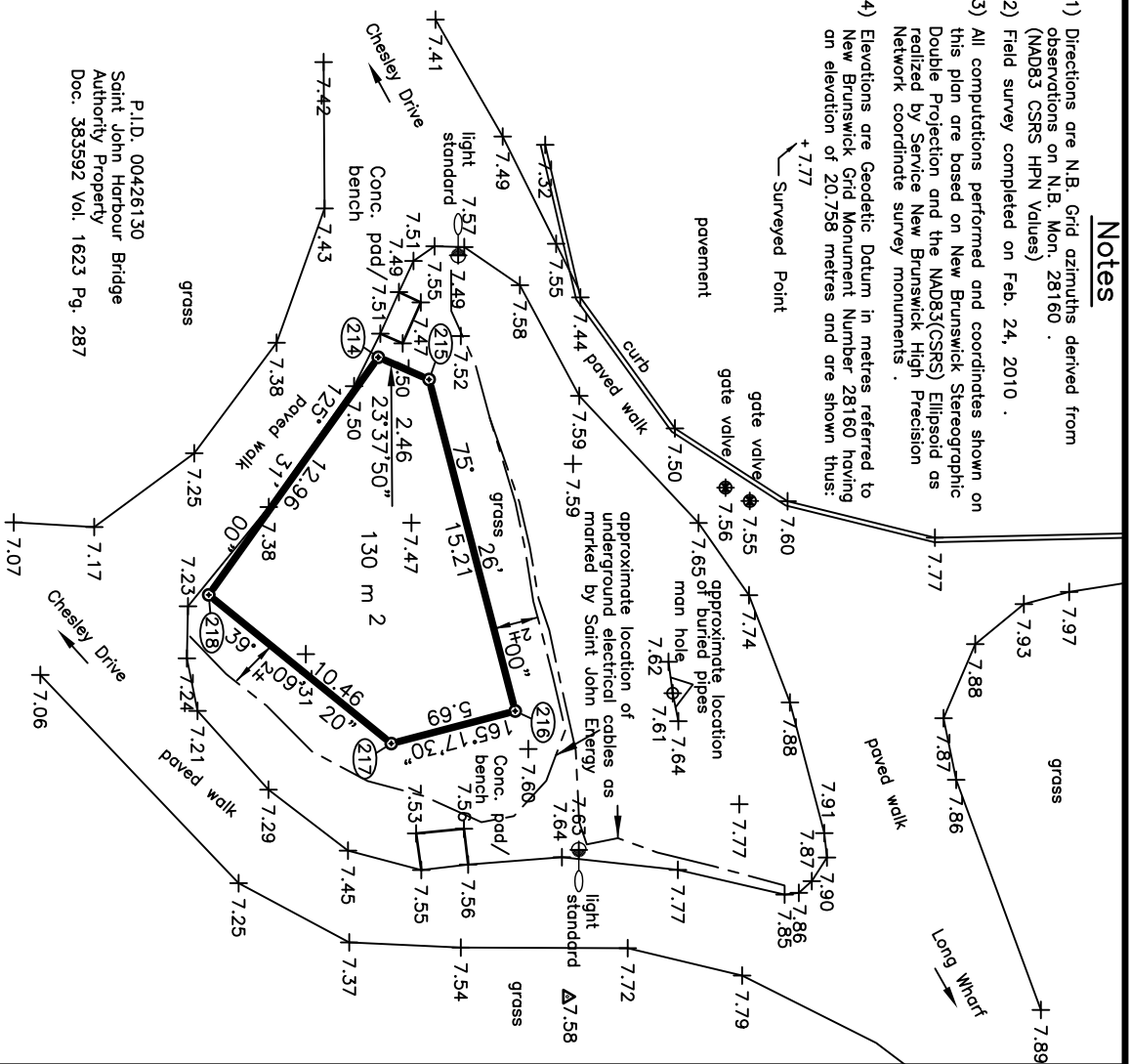
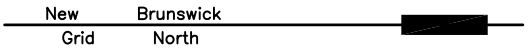


Notes

- 1) Directions are N.B. Grid azimuths derived from observations on N.B. Mon. 28160 (NAD83 CSRS HPN Values)
- 2) Field survey completed on Feb. 24, 2010.
- 3) All computations performed and coordinates shown on this plan are based on New Brunswick Stereographic Double Projection and the NAD83(CSRS) Ellipsoid as realized by Service New Brunswick High Precision Network coordinate survey monuments.
- 4) Elevations are Geodetic Datum in metres referred to New Brunswick Grid Monument Number 28160 having an elevation of 20.758 metres and are shown thus:
 - ⊕ 7.77
 - ⊕ 7.55
 - ⊕ 7.60
 - ⊕ 7.74
 - ⊕ 7.88
 - ⊕ 7.91
 - ⊕ 7.90
 - ⊕ 7.87
 - ⊕ 7.86
 - ⊕ 7.85
 - ⊕ 7.79
 - ⊕ 7.77
 - ⊕ 7.72
 - ⊕ 7.58
 - ⊕ 7.55
 - ⊕ 7.56
 - ⊕ 7.54
 - ⊕ 7.37
 - ⊕ 7.25
 - ⊕ 7.07
 - ⊕ 7.17
 - ⊕ 7.11
 - ⊕ 7.06
 - ⊕ 7.25
 - ⊕ 7.23
 - ⊕ 7.24
 - ⊕ 7.21
 - ⊕ 7.29
 - ⊕ 7.45
 - ⊕ 7.55
 - ⊕ 7.53
 - ⊕ 7.56
 - ⊕ 7.54
 - ⊕ 7.47
 - ⊕ 7.49
 - ⊕ 7.58
 - ⊕ 7.55
 - ⊕ 7.52
 - ⊕ 7.49
 - ⊕ 7.41
 - ⊕ 7.42
 - ⊕ 7.43
 - ⊕ 7.38
 - ⊕ 7.38
 - ⊕ 7.25
 - ⊕ 7.23
 - ⊕ 7.24
 - ⊕ 7.21
 - ⊕ 7.29
 - ⊕ 7.45
 - ⊕ 7.55
 - ⊕ 7.53
 - ⊕ 7.56
 - ⊕ 7.54
 - ⊕ 7.47
 - ⊕ 7.49
 - ⊕ 7.58
 - ⊕ 7.55
 - ⊕ 7.52
 - ⊕ 7.49
 - ⊕ 7.41
 - ⊕ 7.42
 - ⊕ 7.43
 - ⊕ 7.38
 - ⊕ 7.38
 - ⊕ 7.25
 - ⊕ 7.23
 - ⊕ 7.24
 - ⊕ 7.21
 - ⊕ 7.29
 - ⊕ 7.45
 - ⊕ 7.55
 - ⊕ 7.53
 - ⊕ 7.56
 - ⊕ 7.54
 - ⊕ 7.47
 - ⊕ 7.49
 - ⊕ 7.58
 - ⊕ 7.55
 - ⊕ 7.52
 - ⊕ 7.49
 - ⊕ 7.41
 - ⊕ 7.42
 - ⊕ 7.43
 - ⊕ 7.38
 - ⊕ 7.38
 - ⊕ 7.25
 - ⊕ 7.23
 - ⊕ 7.24
 - ⊕ 7.21
 - ⊕ 7.29
 - ⊕ 7.45
 - ⊕ 7.55
 - ⊕ 7.53
 - ⊕ 7.56
 - ⊕ 7.54
 - ⊕ 7.47
 - ⊕ 7.49
 - ⊕ 7.58
 - ⊕ 7.55
 - ⊕ 7.52
 - ⊕ 7.49
 - ⊕ 7.41
 - ⊕ 7.42
 - ⊕ 7.43
 - ⊕ 7.38
 - ⊕ 7.38
 - ⊕ 7.25
 - ⊕ 7.23
 - ⊕ 7.24
 - ⊕ 7.21
 - ⊕ 7.29
 - ⊕ 7.45
 - ⊕ 7.55
 - ⊕ 7.53
 - ⊕ 7.56
 - ⊕ 7.54
 - ⊕ 7.47
 - ⊕ 7.49
 - ⊕ 7.58
 - ⊕ 7.55
 - ⊕ 7.52
 - ⊕ 7.49
 - ⊕ 7.41
 - ⊕ 7.42
 - ⊕ 7.43
 - ⊕ 7.38
 - ⊕ 7.38
 - ⊕ 7.25
 - ⊕ 7.23
 - ⊕ 7.24
 - ⊕ 7.21
 - ⊕ 7.29
 - ⊕ 7.45
 - ⊕ 7.55
 - ⊕ 7.53
 - ⊕ 7.56
 - ⊕ 7.54
 - ⊕ 7.47
 - ⊕ 7.49
 - ⊕ 7.58
 - ⊕ 7.55
 - ⊕ 7.52
 - ⊕ 7.49
 - ⊕ 7.41
 - ⊕ 7.42
 - ⊕ 7.43
 - ⊕ 7.38
 - ⊕ 7.38
 - ⊕ 7.25
 - ⊕ 7.23
 - ⊕ 7.24
 - ⊕ 7.21
 - ⊕ 7.29
 - ⊕ 7.45
 - ⊕ 7.55
 - ⊕ 7.53
 - ⊕ 7.56
 - ⊕ 7.54
 - ⊕ 7.47
 - ⊕ 7.49
 - ⊕ 7.58
 - ⊕ 7.55
 - ⊕ 7.52
 - ⊕ 7.49
 - ⊕ 7.41
 - ⊕ 7.42
 - ⊕ 7.43
 - ⊕ 7.38
 - ⊕ 7.38
 - ⊕ 7.25
 - ⊕ 7.23
 - ⊕ 7.24
 - ⊕ 7.21
 - ⊕ 7.29
 - ⊕ 7.45
 - ⊕ 7.55
 - ⊕ 7.53
 - ⊕ 7.56
 - ⊕ 7.54
 - ⊕ 7.47
 - ⊕ 7.49
 - ⊕ 7.58
 - ⊕ 7.55
 - ⊕ 7.52
 - ⊕ 7.49
 - ⊕ 7.41
 - ⊕ 7.42
 - ⊕ 7.43
 - ⊕ 7.38
 - ⊕ 7.38
 - ⊕ 7.25
 - ⊕ 7.23
 - ⊕ 7.24
 - ⊕ 7.21
 - ⊕ 7.29
 - ⊕ 7.45
 - ⊕ 7.55
 - ⊕ 7.53
 - ⊕ 7.56
 - ⊕ 7.54
 - ⊕ 7.47
 - ⊕ 7.49
 - ⊕ 7.58
 - ⊕ 7.55
 - ⊕ 7.52
 - ⊕ 7.49
 - ⊕ 7.41
 - ⊕ 7.42
 - ⊕ 7.43
 - ⊕ 7.38
 - ⊕ 7.38
 - ⊕ 7.25
 - ⊕ 7.23
 - ⊕ 7.24
 - ⊕ 7.21
 - ⊕ 7.29
 - ⊕ 7.45
 - ⊕ 7.55
 - ⊕ 7.53
 - ⊕ 7.56
 - ⊕ 7.54
 - ⊕ 7.47
 - ⊕ 7.49
 - ⊕ 7.58
 - ⊕ 7.55
 - ⊕ 7.52
 - ⊕ 7.49
 - ⊕ 7.41
 - ⊕ 7.42
 - ⊕ 7.43
 - ⊕ 7.38
 - ⊕ 7.38
 - ⊕ 7.25
 - ⊕ 7.23
 - ⊕ 7.24
 - ⊕ 7.21
 - ⊕ 7.29
 - ⊕ 7.45
 - ⊕ 7.55
 - ⊕ 7.53
 - ⊕ 7.56
 - ⊕ 7.54
 - ⊕ 7.47
 - ⊕ 7.49
 - ⊕ 7.58
 - ⊕ 7.55
 - ⊕ 7.52
 - ⊕ 7.49
 - ⊕ 7.41
 - ⊕ 7.42
 - ⊕ 7.43
 - ⊕ 7.38
 - ⊕ 7.38
 - ⊕ 7.25
 - ⊕ 7.23
 - ⊕ 7.24
 - ⊕ 7.21
 - ⊕ 7.29
 - ⊕ 7.45
 - ⊕ 7.55
 - ⊕ 7.53
 - ⊕ 7.56
 - ⊕ 7.54
 - ⊕ 7.47
 - ⊕ 7.49
 - ⊕ 7.58
 - ⊕ 7.55
 - ⊕ 7.52
 - ⊕ 7.49
 - ⊕ 7.41
 - ⊕ 7.42
 - ⊕ 7.43
 - ⊕ 7.38
 - ⊕ 7.38
 - ⊕ 7.25
 - ⊕ 7.23
 - ⊕ 7.24
 - ⊕ 7.21
 - ⊕ 7.29
 - ⊕ 7.45
 - ⊕ 7.55
 - ⊕ 7.53
 - ⊕ 7.56
 - ⊕ 7.54
 - ⊕ 7.47
 - ⊕ 7.49
 - ⊕ 7.58
 - ⊕ 7.55
 - ⊕ 7.52
 - ⊕ 7.49
 - ⊕ 7.41
 - ⊕ 7.42
 - ⊕ 7.43
 - ⊕ 7.38
 - ⊕ 7.38
 - ⊕ 7.25
 - ⊕ 7.23
 - ⊕ 7.24
 - ⊕ 7.21
 - ⊕ 7.29
 - ⊕ 7.45
 - ⊕ 7.55
 - ⊕ 7.53
 - ⊕ 7.56
 - ⊕ 7.54
 - ⊕ 7.47
 - ⊕ 7.49
 - ⊕ 7.58
 - ⊕ 7.55
 - ⊕ 7.52
 - ⊕ 7.49
 - ⊕ 7.41
 - ⊕ 7.42
 - ⊕ 7.43
 - ⊕ 7.38
 - ⊕ 7.38
 - ⊕ 7.25
 - ⊕ 7.23
 - ⊕ 7.24
 - ⊕ 7.21
 - ⊕ 7.29
 - ⊕ 7.45
 - ⊕ 7.55
 - ⊕ 7.53
 - ⊕ 7.56
 - ⊕ 7.54
 - ⊕ 7.47
 - ⊕ 7.49
 - ⊕ 7.58
 - ⊕ 7.55
 - ⊕ 7.52
 - ⊕ 7.49
 - ⊕ 7.41
 - ⊕ 7.42
 - ⊕ 7.43
 - ⊕ 7.38
 - ⊕ 7.38
 - ⊕ 7.25
 - ⊕ 7.23
 - ⊕ 7.24
 - ⊕ 7.21
 - ⊕ 7.29
 - ⊕ 7.45
 - ⊕ 7.55
 - ⊕ 7.53
 - ⊕ 7.56
 - ⊕ 7.54
 - ⊕ 7.47
 - ⊕ 7.49
 - ⊕ 7.58
 - ⊕ 7.55
 - ⊕ 7.52
 - ⊕ 7.49
 - ⊕ 7.41
 - ⊕ 7.42
 - ⊕ 7.43
 - ⊕ 7.38
 - ⊕ 7.38
 - ⊕ 7.25
 - ⊕ 7.23
 - ⊕ 7.24
 - ⊕ 7.21
 - ⊕ 7.29
 - ⊕ 7.45
 - ⊕ 7.55
 - ⊕ 7.53
 - ⊕ 7.56
 - ⊕ 7.54
 - ⊕ 7.47
 - ⊕ 7.49
 - ⊕ 7.58
 - ⊕ 7.55
 - ⊕ 7.52
 - ⊕ 7.49
 - ⊕ 7.41
 - ⊕ 7.42
 - ⊕ 7.43
 - ⊕ 7.38
 - ⊕ 7.38
 - ⊕ 7.25
 - ⊕ 7.23
 - ⊕ 7.24
 - ⊕ 7.21
 - ⊕ 7.29
 - ⊕ 7.45
 - ⊕ 7.55
 - ⊕ 7.53
 - ⊕ 7.56
 - ⊕ 7.54
 - ⊕ 7.47
 - ⊕ 7.49
 - ⊕ 7.58
 - ⊕ 7.55
 - ⊕ 7.52
 - ⊕ 7.49
 - ⊕ 7.41
 - ⊕ 7.42
 - ⊕ 7.43
 - ⊕ 7.38
 - ⊕ 7.38
 - ⊕ 7.25
 - ⊕ 7.23
 - ⊕ 7.24
 - ⊕ 7.21
 - ⊕ 7.29
 - ⊕ 7.45
 - ⊕ 7.55
 - ⊕ 7.53
 - ⊕ 7.56
 - ⊕ 7.54
 - ⊕ 7.47
 - ⊕ 7.49
 - ⊕ 7.58
 - ⊕ 7.55
 - ⊕ 7.52
 - ⊕ 7.49
 - ⊕ 7.41
 - ⊕ 7.42
 - ⊕ 7.43
 - ⊕ 7.38
 - ⊕ 7.38
 - ⊕ 7.25
 - ⊕ 7.23
 - ⊕ 7.24
 - ⊕ 7.21
 - ⊕ 7.29
 - ⊕ 7.45
 - ⊕ 7.55
 - ⊕ 7.53
 - ⊕ 7.56
 - ⊕ 7.54
 - ⊕ 7.47
 - ⊕ 7.49
 - ⊕ 7.58
 - ⊕ 7.55
 - ⊕ 7.52
 - ⊕ 7.49
 - ⊕ 7.41
 - ⊕ 7.42
 - ⊕ 7.43
 - ⊕ 7.38
 - ⊕ 7.38
 - ⊕ 7.25
 - ⊕ 7.23
 - ⊕ 7.24
 - ⊕ 7.21
 - ⊕ 7.29
 - ⊕ 7.45
 - ⊕ 7.55
 - ⊕ 7.53
 - ⊕ 7.56
 - ⊕ 7.54
 - ⊕ 7.47
 - ⊕ 7.49
 - ⊕ 7.58
 - ⊕ 7.55
 - ⊕ 7.52
 - ⊕ 7.49
 - ⊕ 7.41
 - ⊕ 7.42
 - ⊕ 7.43
 - ⊕ 7.38
 - ⊕ 7.38
 - ⊕ 7.25
 - ⊕ 7.23
 - ⊕ 7.24
 - ⊕ 7.21
 - ⊕ 7.29
 - ⊕ 7.45
 - ⊕ 7.55
 - ⊕ 7.53
 - ⊕ 7.56
 - ⊕ 7.54
 - ⊕ 7.47
 - ⊕ 7.49
 - ⊕ 7.58
 - ⊕ 7.55
 - ⊕ 7.52
 - ⊕ 7.49
 - ⊕ 7.41
 - ⊕ 7.42
 - ⊕ 7.43
.



P.I.D. 00426130
 Saint John Harbour Bridge
 Authority Property
 Doc. 383592 Vol. 1623 Pg. 287



New Brunswick Grid Co-Ordinate Values

STA	X	Y	RMKS
214	2 533 431.390	7 363 677.681	CALC. PT.
215	2 533 432.377	7 363 679.937	CALC. PT.
216	2 533 447.099	7 363 683.763	CALC. PT.
217	2 533 448.544	7 363 678.258	CALC. PT.
218	2 533 441.942	7 363 670.150	CALC. PT.
28160	2 535 354.190	7 363 188.696	N.B.MON. (HPN)

Scale Factor Applied 1.000035

Site Plan

SU 225-Passage In Time Site,
 Harbour Passage,
 City of Saint John, New Brunswick.

Prepared by
HUGHES SURVEYS & CONSULTANTS INC.

Date Mar. 5, 2010



Dwg. No. S10071	Disk No. 2010	Topos H10071	Disk No. 2010
Dwn. By B.S.M.	Job No. Y10-071-R	Map Ref. C/08-12C.SW(1)	